



## *CANINE HOOPERS OF CANADA*

---

### *CHC Trial Host Handbook 2026*

- 1. Applying to Host A Trial*
- 2. Trial Entries and Premiums*
- 3. Trial Preparation*
- 4. Divisions*
- 5. Categories*
- 6. Ring Layout*
- 7. Equipment*
- 8. Awards*
- 9. Scoring and Trial Results*
- Trial Host Application*

### **1. Applying To Host A CHC Sanctioned Trial**

Before submitting an application to host a Canine Hoopers of Canada (CHC) sanctioned trial, the applicant should be well acquainted with the published CHC Official Rules and Guidelines.

Applications will be accepted up to 6 weeks prior to the trial date. Note: A late-submission fee of \$50 will be charged for applications submitted 5 weeks or less prior to the trial date.

It is the trial host's responsibility to contract a certified CHC judge no less than 6 weeks prior to the trial date.

Trial host/club must be fully insured.

### **2. Trial Entries and Premiums**

Trial hosts have the choice of offering entry by paper or electronically (online, email etc).

All premiums should include the following:

- Name and logo of CHC
- Name of host club or individual
- Date, time, venue address
- Details of how to enter
- Open and closing dates
- Entry fees
- List of classes and levels offered
- Description of classes offered
- Details of extra points
- Dog measuring reference
- Name of judge
- Reference to rules + guidelines
- Disclaimer

**A copy or link of the trial premium must be sent to CHC prior to the opening of the trial entries**

### **3. Trial Preparation**

The Applicant agrees to:

- Run the sanctioned trial applied for in accordance with the CHC Rules & Guidelines
- Accept entries and maintain a waiting list. If a waiting list is necessary, it shall be based on the order entries were received
- Prepare the premium list and running order
- Act as the onsite disciplinary committee to immediately resolve any incidents or complaints, as best as they can
- Arrange for timer, scribe, trial secretary, gate steward and any other ring crew necessary
- Provide at the trial site a measuring wheel, score sheets/pad, stopwatch/timers, first aid kit
- Provide a copy of all courses
- Ensure all equipment is to the regulation standards set in the CHC Official Rules & Guidelines
- Provide sufficient washroom facilities for competitors
- Ensure the ring area has a fence or barrier no less than 30" high including entry + exit pens/gates
- Refund fees, less reasonably incurred expenses, if the show is cancelled due to unforeseen circumstances
  
- Confirm with the contracted judge in writing (email is acceptable):
  - A list of all classes to be judged
  - A map of the ring including dimensions, any obstructions and enter/exit gate positions
  - Travel and accommodation arrangements
  - Any other arrangements as agreed upon by the club and judge
  -

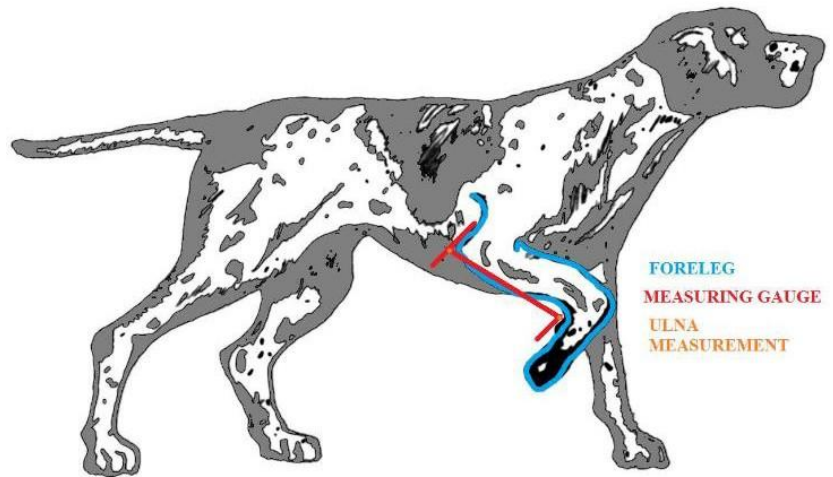
#### 4. Divisions

CHC has 3 size divisions – small, medium, and large. Dogs must be measured to ensure they compete in the correct size division. Dogs are measured using the foreleg between wrist and elbow, otherwise known as the ulna. Measurement is from the carpal joint (wrist) up to the elbow. (See diagram below.)

Dogs must be a minimum of 15 months for their first measure. Dogs measuring on the borderline of two sizes require an additional measurement at 2 years.

By following the guide and diagrams below, owners can measure their own dogs and add its measure to their application when registering with Canine Hoopers of Canada. However, if a size division seems questionable, a judge can ask for the dog to be re-measured.

Ulna Length	Size Division
5 inches and under	Small
5 to 7 inches	Medium
Over 7 inches	Large



#### 5. Categories

There are now two entry categories

1. **Regular:** Dogs continue to enter by rules for size: Small, medium or large

2. **NEW PREFERRED Category**

“For dogs that find completing full courses too demanding due to physical challenges. This includes veteran dogs and those with medical or other physical conditions. The Preferred category offers courses with shorter sequences”

Dogs that are veterans in agility are permitted but not obligated to run in the Preferred category. This will be at the owner’s discretion

Teams may switch from Regular to Preferred category at any time and in any level from Novice to Proficient. Preferred courses have a maximum of **16 obstacles**, but all other aspects such as distance, bonuses, times and rules remain unchanged. Size measurements also remain the same: small, medium or large

Please note that once a dog has entered the Preferred category, they must continue to run in that division and no longer qualify for the Regular category

## 6. Ring Layout

Beginner: minimum 60X65 ft, maximum 60X80 ft.

Intermediate: minimum 60X80 ft.

Novice: minimum 60X65 ft.

Advanced: minimum 60X80 ft.

Proficient: minimum 80X100 ft.

## 7. Equipment

It is recommended host clubs have at least the following number of obstacles available for a judge's course design, if offering all of the CHC classes, i.e. Hoopers, Parkour, Tungo and Challenge

**Hoops:** Beginner/Novice: 10 - 17

Intermediate/Advanced/Proficient: 15 - 20

**Barrels:** Beginner/Novice: 4 - 6

Intermediate/Advanced/Proficient: 6 - 8

**Tunnels:** Beginner/Novice: 2 - 4

Intermediate/Advanced/Proficient: 3 - 4

**Gates:** Beginner/Novice: 1 - 2

Intermediate/Advanced/Proficient: 2 - 3

### Hoops

The "hoop" is made from hula hoops or PEX pipe material and is inserted into the base uprights. The hula hoop/PEX pipe is pushed in until it contacts the bottom of the hoop base.

Hoop upright can be made from other materials provided they are safe and have no sharp areas where a dog could injure themselves. Hoops should be weighted down to maintain their position outside in the elements. They should NOT be pegged or difficult to move, in case of impact.

**Width** between the supporting feet: 34 or 36 inches (86 to 91.5 cm)

**Height** of the hoop: 36 or 38 inches (91.5 or 96.5 cm)

**Supporting feet:** at least 12 inches (30.5 cm) in each

direction **Uprights:** 16 or 18 inches (40.6 to 45.7 cm)

tall

Beginning **January 1<sup>st</sup> 2026**, for safety purposes, all trial hosts must use baseless hoops only for sanctioned trials



## **Barrels**

Barrels used should be made of either a mesh material, cloth, or plastic material.

Barrels are 23 to 27 inches (58 to 68.5 cm) in diameter and at least 28 inches (71 cm) tall. Barrels may need to be weighed in windy weather for safety. Blue barrels (shown below) are a good example to use for Hooper classes; pop-up bins that are the same height and diameter could also be used. For competitions, **provided barrels meet the CHC requirements, trial hosts are permitted to use both pop up and plastic barrels in the same course**

The colour of the barrel:

- Must be clearly visible to dogs (Dogs see bold yellows and blues best and have the most difficulty seeing reds)
- Must also contrast (to a dog) with its surroundings

If the colour of the barrel is not easily visible to dogs, contrast strips must be attached.

The barrels must not be securely held in place. To prevent them from rocking, or easily being moved, they can be stabilized with internal weights. Adding internal weights must not in any way compromise the safety of dogs.



## **Gates**

Gates are made of a lightweight material that is damage-resistant and has no sharp edges. Aluminum, PVC, or safe synthetic materials are allowed.

A gate must be designed to:

- Allow eye contact between dogs and handlers
- Prevent dogs from going through it
- Avoid impeding the expected path of the dog
- Always maintain a secure and stable position
- Be difficult to knock over

**Width:** 3 to 4 ft (1 to 1.2 m)

**Height:** 3 to 4 ft (1 to 1.2 m)

**Support Feet:** 2 ft (.6 m)



## ***Tunnels***

The tunnel is made of a flexible material that is damage-resistant and has no sharp edges.

The colour of the tunnel (in the upper area or throughout):

- Must be clearly visible to dogs
- Must also contrast (to a dog) with its surroundings
- Must always be pulled out to full length

31.5-to-32-inch (80 cm) diameter tunnels are used and can be from 3 to 6.5 ft (1 to 2 m) in length. Safety rules are paramount with tunnels; they must be secured at all times with tunnel bags.

Bottomless tunnels have nothing across the bottom and will need to be secured in outside elements.

Entrances to tunnels should be straight. A tunnel exit can be slightly curved to the next object, provided the view through the tunnel from the dog's angle is straight.



For sanctioned trials, the same style of tunnel must be used in a class.

## 8. Awards

The host club must provide ribbons/awards for qualifying scores as well as 1<sup>st</sup>, 2<sup>nd</sup>, and 3<sup>rd</sup> placements and all titles. The CHC name and logo should be displayed on all ribbons/awards.

Ribbon colors are as follows: **1<sup>st</sup> Blue**    **2<sup>nd</sup> Red**    **3<sup>rd</sup> White**

Qualifying Score: Host Club's Choice

Title Ribbons: Host Club's Choice

### Titles

<b>CHC Beginner Level Titles</b>		
Earned under 2 judges		
<b>BHDC</b>	<b>BPDC</b>	<b>BTDC</b>
50 points Beginner Hoopers	50 points Beginner Parkour	50 points Beginner Tungo
<b>CHC Beginner Collective Title = BHDC + BPDC + BTDC</b>		

<b>CHC Novice Level Titles</b>		
Earned under 2 judges		
<b>NHDC</b>	<b>NPDC</b>	<b>NTDC</b>
75 points Novice Hoopers	75 points Novice Parkour	75 points Novice Tungo
<b>CHC Novice Collective Title = NHDC + NPDC + NTDC</b>		

<b>CHC Intermediate Level Titles</b>		
Earned under 2 judges		
<b>IHDC</b>	<b>IPDC</b>	<b>ITDC</b>
100 points Intermediate Hoopers	100 points Intermediate Parkour	100 points Intermediate Tungo
<b>CHC Intermediate Collective Title = IHDC + IPDC + ITDC</b>		

<b>CHC Advanced Level Titles</b>		
Earned under 2 judges		
<b>AHDC</b>	<b>APDC</b>	<b>ATDC</b>
120 points Advanced Hoopers	120 points Advanced Parkour	120 points Advanced Tungo
<b>CHC Advanced Collective Title = AHDC + APDC + ATDC</b>		

<b>CHC Proficient Level Titles</b>		
Earned under 2 judges		
<b>PHDC</b>	<b>PPDC</b>	<b>PTDC</b>
120 points Proficient Hoopers	120 points Proficient Parkour	120 points Proficient Tungo

<b>Hoopers Trial Champion of Canada HTChC</b>	<b>PHDC + PPDC + PTDC</b>
---	---------------------------

## Challenge Class Titles

CHC Challenge Class		
Novice Challenge Dog of Canada	<b>75 points</b> Earned under 2 judges	NCHDC
Intermediate Challenge Dog of Canada	<b>100 points</b> Earned under 2 judges	ICHDC
Advanced Challenge Dog of Canada	<b>120 points</b> Earned under 2 judges	ACHDC
Proficient Challenge Dog of Canada	<b>120 points</b> Earned under 2 judges	PCHDC
<b>CHC – Challenge Trial Champion CHC-CHaTch</b>	<b>NCHDC + ICHDC + ACHDC + PCHDC</b>	

### **9. Scoring and Trial Results**

Trial hosts submitting results to CHC for a sanctioned trial:

- Scoring should be recorded using the CHC scoring spreadsheet (**contact CHC**)
- **Trial host should submit a copy of the scoring/results** by email to [caninehooperscanada@gmail.com](mailto:caninehooperscanada@gmail.com) and must be received within 10 calendar days
- Qualifying dogs report should be submitted as a separate form (**see Trial Host Forms/contact CHC**)
- The statement of trial fees should also be submitted by email (**see Trial Host Forms/contact CHC**)
- payment should be sent by e-transfer: [caninehooperscanada@gmail.com](mailto:caninehooperscanada@gmail.com)

**Host Trial Application:** <https://forms.wix.com/r/7087237115733344341>

[For more information contact CHC: caninehooperscanada@gmail.com](mailto:caninehooperscanada@gmail.com)

[© This document remains the property of Canine Hoopers of Canada.](#)

[Publishing all or any part without prior permission is prohibited.](#)

